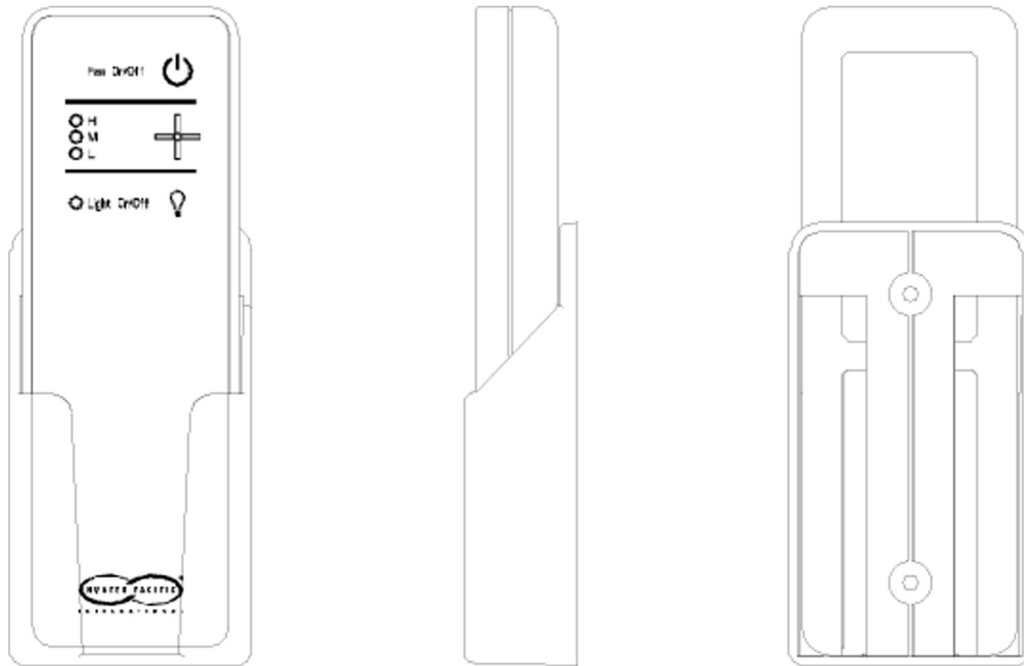


## Installation and User Manual



Isolation switch and wall plate required. To suit the location and décor these parts must be supplied by the installing electrician.



**WARNING-** THIS PRODUCT MUST BE INSTALLED ONLY BY A LICENSED OR QUALIFIED ELECTRICAL WORKER. FAILURE TO FOLLOW THE WIRING RULES OR THESE INSTRUCTIONS MAY RESULT IN AN ELECTRICAL HAZARD. WARRANTY IS VOID UNLESS A CERTIFICATE OF COMPLIANCE OR A RECEIPT FROM A LICENSED INSTALLER IS AVAILABLE.



Turn off the isolation switch for the fan/light before changing lamps, cleaning or servicing the fan.



Contact with rotating ceiling fan blades and live parts of lamp holders can cause serious injury or death.

### Warranty Procedure\*

For online warranty bookings visit: [www.hunterpacific.com.au](http://www.hunterpacific.com.au) (24hours, 7 days)  
For technical advice call: 1300 360 280 (Monday to Friday from 9am to 5pm EST)

\* Warranty only available within Australia



## **INSTALLATION INSTRUCTIONS & RECOMMENDATIONS** **FOR ELECTRICIANS**

This remote control system is for use only as intended and connection to equipment other than ceiling fans and associated lighting or installation for purposes outside of those recommended by Hunter Pacific International may void the manufacturers warranty against defects.

1. The receiver and Handset portions are for indoor use only or must be protected against moisture.
2. AS/NZS60335-1:2011 Clause 7.12.2 states the following: "If a stationary appliance is not fitted with a supply cord and a plug, or with other means for disconnection from the supply mains having a contact separation in all poles that provide full disconnection under over voltage category III conditions, the instructions shall state that means for disconnection must be incorporated in the fixed wiring in accordance with the wiring rules"
3. Therefore, to comply with the above this system must be connected via a switch that is accessible to the user or a suitably labelled all-pole RCD that is dedicated to ceiling fans only. Emergency disconnection under fault conditions is not covered by warranty. This requirement applies to all ceiling fans and remote controls of any make. Owners must be aware of the warranty limitations if unit is installed without an isolating switch.
4. DO NOT INSTALL IN THE CEILING OR WALL CAVITY. This may exceed its maximum operating temperature, reduce its life or make it work erratically and **WILL** void warranty.
5. An internal, non-replaceable high rupture capacity fuse is fitted in the receiver. If an in-situ receiver is open circuit then check for a fault in the attached fan or light before replacing and possibly damaging another receiver. The maximum total load is 300VA.

### **WIRING CONNECTION:**

Wire the remote control receiver to the fan and light using the wiring tails as follows:

- A) The fan and light must be earthed. The earth wire is run directly to the earth terminal of the fan/light.
- B) Active and neutral are connected to the brown (A) and blue (N) input wires of the receiver.
- C) The fan active wire is connected to the brown output wire, the neutral to the blue output wire. The light active is connected to the red (or white) output wire and the light neutral is connected to the blue output wire (same as the fan). Do not allow any active/neutral to bypass the receiver or damage may result.
- D) Place the receiver into the under ceiling canopy within the space provided in the suspension bracket. Do not place in ceiling cavity.
- E) Test system. Show user how the isolation switch or RCD works and confirm Power-On-Light (POL) selection meets the consumers needs. Label the switch or RCD accordingly (eg. "Ceiling Fans").

*One isolation switch per fan must be used. Typically this is a light switch in the room containing the fan/light. If an isolation switch is not fitted the unit cannot be paired/programmed and may result in unnecessary service calls being charged to the owner. Re-programming and pairing is not covered under warranty.*

# KONETIK® OPERATING INSTRUCTIONS

The following statement is required by Australian Standards AS/NZS60335-1 & AS/NZS60335-2-80:

“This appliance is not intended for use by persons (including children) with reduced physical, sensory or mental capabilities, or lack of experience and knowledge, unless they have been given supervision or instruction concerning use of the appliance by a person responsible for their safety. Children should be supervised to ensure that they do not play with the appliance.” **DANGER: Contact with ceiling fan blades can cause serious injury or death.**

## OWNERS PLEASE READ WARRANTY TERMS AND ITEM 3 OF THE INSTALLATION INSTRUCTIONS

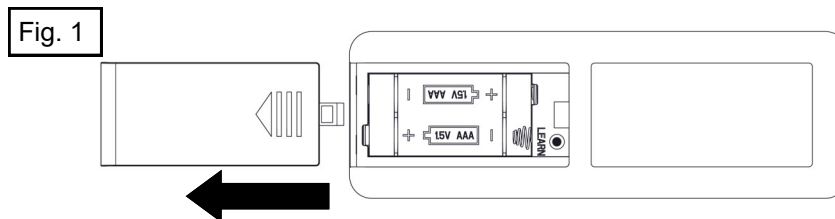
### Instructions for Use

Press the FAN ON/OFF button to operate fan. The fan speed LED will give a long blink to show fan is on and a short blink when it is off. Press the FAN SPEED button to cycle fan speeds. If the fan is off it will turn on when the fan speed button is pressed. The fan speed LED will show the selected speed. Press the Light button once to toggle light on or off. The light LED will give a long blink to show light is on and a short blink when it is off.

The Handset must be within 5 metres of the receiver but may work over longer distances. Please also read the POWER-ON LIGHT (POL) SELECTION section of the installation instructions.

### Handset Battery Installation/Replacement

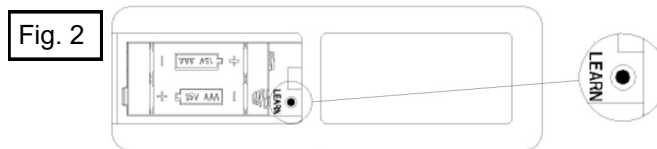
Open the battery compartment by sliding the hatch downwards (Fig. 1). Gently press the grooved section inwards to disengage latch. UNWRAP THE PLASTIC FROM AROUND NEW BATTERIES (IF PRESENT). Observe polarity and make sure battery sits properly in recess. Slide hatch back into place.



### How to Add a New or Replacement Handset

The receiver can learn the identification code for a new Handset using the following procedure (Please note a maximum of 2 Handsets can be paired to one receiver):

1. Turn off the power to the receiver at the isolation/wall switch and wait for 30 seconds.
2. Toggle the INCOMING MAINS power ON and OFF two times (prior to installation it may be more convenient to connect the receiver to a power point via a flex)
3. The receiver will beep four times when it enters program mode. If the timing is too long or too short simply keep cycling the power until it does enter program mode (4 beeps).
4. Wait 3 seconds then move new Handset within 2 meters of the receiver and press and hold the “Learn” button located in battery compartment of Handset (Fig. 2) for 3 seconds, the receiver will beep twice (if light fitted to fan, light will also flash once) to indicate the new Handset has successfully paired with the receiver.



### How to Erase a replacement Handset

Please note that the original Handset supplied with the receiver cannot be erased from the receivers memory. Only a replacement Handset can be erased from the receivers memory. To erase a Handset from the receiver follow the below procedure:

1. Turn off the power to the receiver at the isolation/wall switch and wait for 30 seconds.
2. Toggle the INCOMING MAINS power ON and OFF two times (prior to installation it may be more convenient to connect the receiver to a power point via a flex)
3. The receiver will beep four times when it enters program mode. If the timing is too long or too short simply keep cycling the power until it does enter program mode (4 beeps).
4. Wait 3 seconds then move new Handset within 2 meters of the receiver and press and hold the “Learn” button located in battery compartment of Handset (Fig. 2) for 8 seconds, the buzzer will beep 3 times (if light fitted to fan, light will also flash twice) to indicate the Handset has been successfully erased from the receiver.

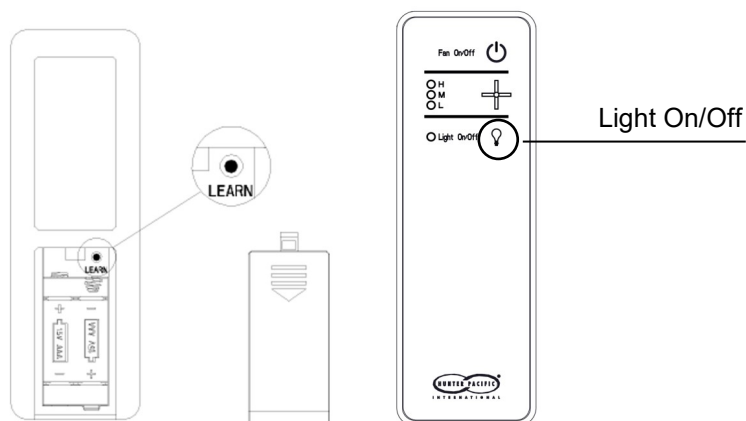
### POWER-ON-LIGHT (POL) Selection

When POL is ON the light will turn on when power is applied to the receiver (via an external switch or after a power failure). This allows the fan light to be turned on/off by the wall switch when the Handset is not available. When POL is OFF the light will remain off when power is applied. The OFF position is recommended for holiday houses and similar locations where the light may switch on unintentionally if a power failure occurs. The fan will always remain off when power is turned on. POL selection can be changed by the user through the remote control handpiece as follows:

**POL ON:** Turn light ON using Handset. Remove battery cover and press and hold the “LEARN” button. Whilst holding down the “LEARN” button press the “Light On/Off” button once. The receiver will beep 4 times and the light on the fan will flash twice. When POL is ON the light will turn on when power is applied to the receiver (via an external switch or after a power failure).

**POL OFF:** Turn light OFF using Handset. Remove battery cover and press and hold the “LEARN” button. Whilst holding down the “LEARN” button press the “Light On/Off” button once. The receiver will beep 4 times and the light on the fan will flash twice. When POL is OFF the light will remain off when power is applied to the receiver (via an external switch or after a power failure).

Fig. 3



### Colour Changing Technology (CCT) LED Operation Instruction

- Press the Light On/Off button on the remote handpiece to change the Colour Temperature from Warm White (3000K), Cool White (4000K) or Daylight (6000K).
- Once desired colour temperature is selected operate the light as per usual (using remote handpiece).

\* Please note the CCT function will **ONLY** work with compatible Hunter Pacific International ceiling fans equipped with Colour Changing Technology (CCT) LED lights.

### WARRANTY TERMS AND CONDITIONS:

This statement is required by the Australian Consumer Law 2010: “Our goods come with guarantees that cannot be excluded under the Australian Consumer Law. You are entitled to a replacement or refund for a major failure and for compensation for any other reasonably foreseeable loss or damage. You are also entitled to have the goods repaired or replaced if the goods fail to be of acceptable quality and the failure does not amount to a major failure.”

**THE PERIOD FOR WARRANTY AGAINST DEFECTS IS 12 MONTHS FROM DATE OF PURCHASE. A MAJOR FAILURE IS WHEN THE REMOTE CONTROL SYSTEM FAILS DUE TO AN INTERNAL DEFECT OR AN EXTERNAL DEFECT PRESENT BEFORE THE DEVICE IS INSTALLED.**

**NOTE: YOU WILL BE CHARGED A SERVICE CALL FEE IF THE PRODUCT IS NOT DEFECTIVE OR IS DAMAGED BY POWER SURGES, LIGHTNING, WEATHER, MISUSE OR SIMILAR SITUATIONS.**

**TO BE PROTECTED BY WARRANTY ONLY INSTALL ACCORDING TO THESE INSTRUCTIONS, THE APPLICABLE AUSTRALIAN STANDARDS AND WIRING RULES.**

## Warranty Procedure\*

For online warranty bookings visit: [www.hunterpacific.com.au](http://www.hunterpacific.com.au) (24hours, 7 days)  
For technical advice call: 1300 360 280 (Monday to Friday from 9am to 5pm EST)

\* Warranty only available within Australia